

ALISON UTTLEY



01

ROOTS

Canadian
(Slovenian/
English/
German)



02

HOME

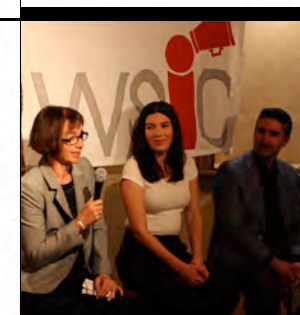
Toronto,
Ontario,
Canada



03

INTERESTS

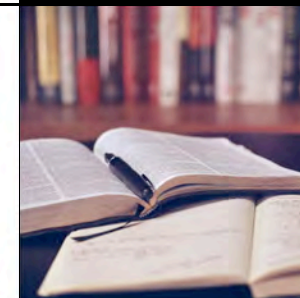
Reading,
Writing, Tech,
Kayaking



04

CAUSE

Organizing talks
for "Why
Should I Care?"



05

GETAWAY

Trails, Lakes,
Parks



06

VOCATION

Marketing,
Teaching,
Consulting

07

WORK

Theatre,
Film, Festival



LUMINATO FESTIVAL

Luminato Festival presents a free and ticketed program of local and international artists delivering adventurous art in adventurous places.

Toronto's global multi-arts festival dedicated to performance, visual art, music, theatre, dance, and more

WHEN June each year
 WHERE Toronto, Canada
 SINCE 2007

“

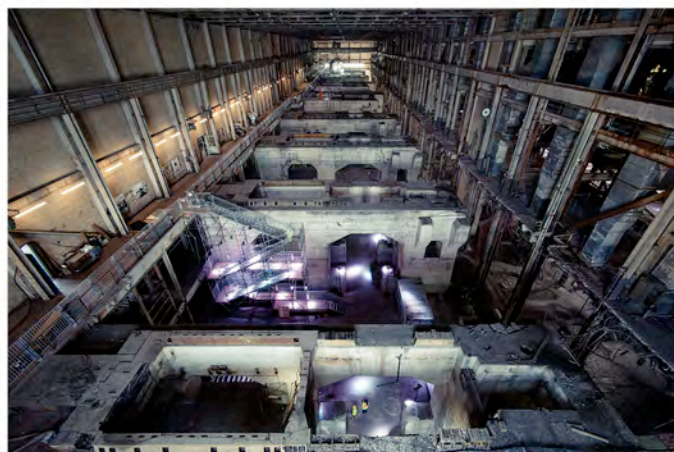
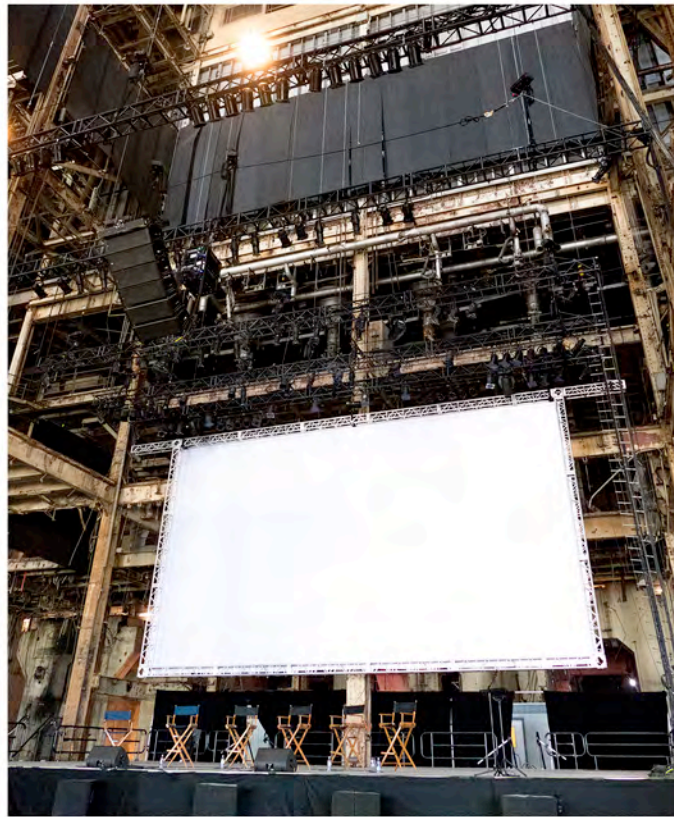
*10 years
 100+ new works of art,
 3,000+ performances
 13,000+ artists
 82% Canadian
 18% international*

”



TOP LEFT: Unsound Toronto 2014
 ABOVE: Design Exchange installation, 2015
 RIGHT: One Thousand Speculations, 2013





HEARN GENERATING STATION

ART IN FOUND SPACES



In June 2016, Luminato Festival temporarily transformed the Hearn Generating Station, a giant decommissioned power plant and one of Toronto's unique industrial landmarks, into the world's largest multi-arts centre under one roof with a theatre, music stage, site-specific performance space, restaurants, bars and more.

TOP TO BOTTOM: Custom-built Theatre,
Music Stage, Turbine Hall from above

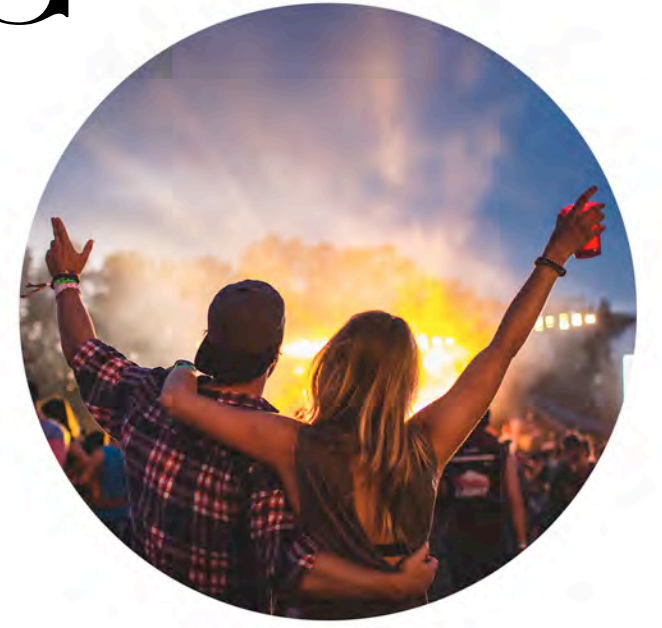
CENTRE: Basejumpers at the Hearn
TOP RIGHT: Front lobby

Choir! Choir! Choir!

1,500 singers came to Luminato Festival at the Hearn Generating Station to sing Leonard Cohen's *Hallelujah* with Rufus Wainwright.



LOOKING AHEAD



We want to set a model for cultural organizations transforming unused spaces. These sample projects in Toronto are just the start.



In/future

In/future transformed the unused Ontario Place with 50+ art installations.



Under Gardiner

Project: Under Gardiner will transform a 1.75 km stretch of forgotten space into vibrant common ground.



Rail Deck Park

Rail Deck Park is a proposed large urban park in Downtown Toronto, set on a constructed deck that encloses the active Railway Lands.